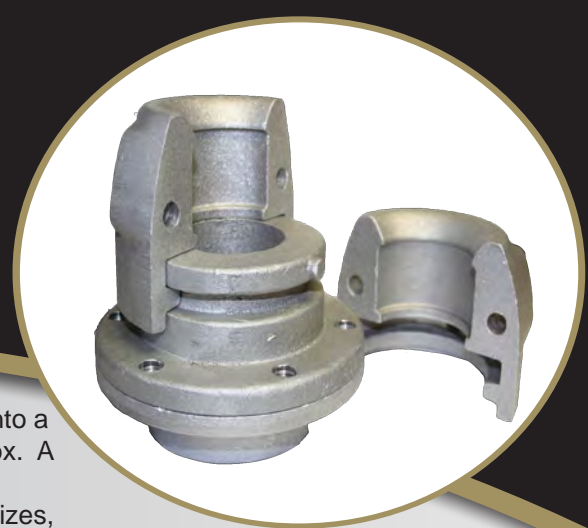








PATTON & COOKE CO. STRAIN RELIEF ENTRANCE FITTINGS



The strain relief entrance fitting combines a watertight seal with a positive clamping action around the cable. It is ideal for permanent entry of a cable into a mine power center, switchgear, disconnect switch or standard terminating box. A new locking feature integrated into the entrance fitting stops the fitting from rotating on the cable causing damage. These fittings are available in many sizes, which cover cable outside diameters from 0.82" - 1.87" (20.8 mm - 88.9 mm).

Illustration (not to scale)	Outside Cable Diameter		Entrance Fitting Frame Catalogue Number	Outside Cable Diameter		Gasket Kit Catalogue Number
	(mm)	(in)		(mm)	(in)	
	20.8-47.5	0.820-1.870	C150F3029	20.8-22.1	0.82-0.87	C150F3004
				22.4-23.9	0.88-0.94	C150F3005
				24.1-25.7	0.95-1.01	C150F3006
				25.9-26.9	1.02-1.06	C150F3007
				27.2-28.4	1.07-1.12	C150F3008
				28.7-31.8	1.13-1.25	C150F3009
				32.0-34.8	1.26-1.37	C150F3010
				35.0-38.1	1.38-1.50	C150F3011
				38.4-41.1	1.51-1.62	C150F3012
				41.4-44.5	1.63-1.75	C150F3013
	47.8-60.2	1.880-2.370	C150F3030	47.8-50.8	1.88-2.00	C150F3015
				51.1-53.8	2.01-2.12	C150F3016
				54.1-57.2	2.13-2.25	C150F3017
				57.4-60.2	2.26-2.37	C150F3018
	60.5-69.9	2.380-2.750	C150F3031	60.5-63.5	2.38-2.50	C150F3019
				63.8-66.5	2.51-2.62	C150F3020
				66.8-69.9	2.63-2.75	C150F3021
	70.1-88.9	2.760-3.500	C150F3032	70.1-72.9	2.76-2.87	C150F3022
				73.2-76.2	2.88-3.00	C150F3023
				76.5-79.2	3.01-3.12	C150F3024
				79.5-82.6	3.13-3.25	C150F3025
				82.8-85.6	3.26-3.37	C150F3026
				85.9-88.9	3.38-3.50	C150F3027

ORDERING PROCEDURE:

1. Determine the cable outside diameter.
2. Select the catalogue number of the strain relief entrance fitting.
3. Clamp inserts and cable gasket must be purchased separately as a kit for the entrance fitting.

Example: Cable O/D 2.25"

Strain Relief Entrance Fitting: **C150F3030**

Entrance Fitting Gasket Kit: **C150F3017**

SELECTION REMINDERS:

1. Each kit consists of 2 clamp inserts and 1 cable gasket.
2. Choose the kit to fit the outside diameter of the cable.
3. Make sure that the O/D of the kit chosen falls within the outside cable diameter range of the strain relief entrance fitting.

See page 4 for illustrations of Strain Relief Entrance Fitting.

ENTRANCE FITTINGS FOR TECK CABLE, STEEL WIRE ARMOUR CABLE AND CONDUIT ARE ALSO AVAILABLE, CONTACT PATTON & COOKE.



We make the connection.

High Voltage Equipment Solutions. Design and Manufacturing.